



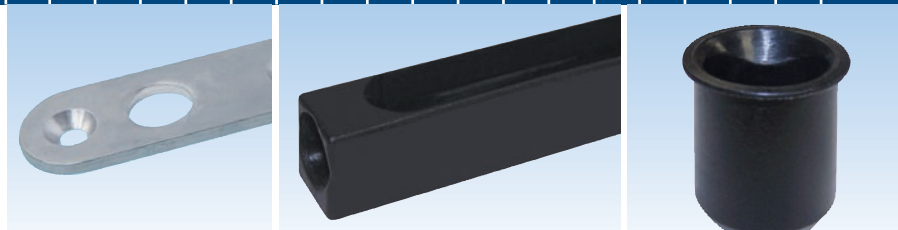
WINDOW TECHNOLOGY  
DOOR TECHNOLOGY  
AUTOMATIC ENTRANCE SYSTEMS  
BUILDING MANAGEMENT SYSTEMS



DOOR TECHNOLOGY – ORDER CATALOG | SECTION 03.6



## Astragal Mortise Door Lock



Securing technology for you



# Astragal Mortise Lock

Backset Adjustable for Astragal 16 - 28mm



Unlocked



Locked

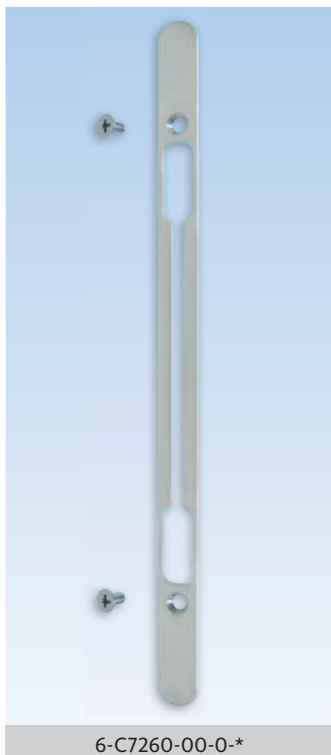
## Astragal Mortise Lock

Description	Color	PU	Part Number
Mortise lock	Zinc	10	6-C7250-19-0-0
* = Color    PU = Packaging Unit			

### Additional information

- Used on the inactive panel of double doors, french doors and garden doors
- Shoot extends to 25mm adjustable
- Non-handed mechanism
- 16mm faceplate with radius ends for easy installation and cleaner look
- Backset adjustable for astragal 16mm to 28mm
- Use with 10mm rods

03  
6



6-C7260-00-0-\*

## Mortise Lock Faceplate

Description	Color	PU	Part Number
Faceplate	Dark Bronze PC	50	6-C7260-00-0-5
	Black PC	50	6-C7260-00-0-6
	Stainless Steel	50	6-C7260-00-0-8B
* = Color    PU = Packaging Unit			



### Additional information

- 16mm stainless steel 304 faceplate
- Use with astragal mortise lock (6-C7250-19-0-0)
- Supplied with installations screws

# Driving Rods

## for Mortise Lock



Rods

### Top and Bottom Rods

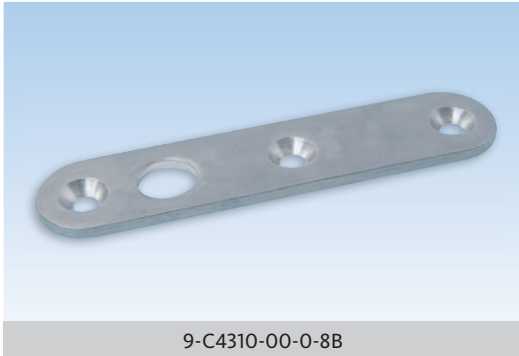
Description	Color	PU	Part Number
<b>Top rods without thread</b>			
641mm (25 1/4") long for door slab 79"	Bichromated	10	9-C5212-00-0-3
1047mm (41 1/4") long for door slab 95"	Bichromated	10	9-C5214-00-0-3
<b>Top rods with thread</b>			
603mm (23 3/4") long	Bichromated	10	9-U1011-00-0-3
654mm (25 3/4") long	Bichromated	10	9-U1012-00-0-3
705mm (27 3/4") long	Bichromated	10	9-U1013-00-0-3
1010mm (39 3/4") long	Bichromated	10	9-U1014-00-0-3
1194mm (47") long	Bichromated	10	9-U1020-00-0-3
1619mm (63 3/4") long	Bichromated	10	9-U1015-00-0-3
<b>Bottom rod with thread – Mortise lock height 1280mm</b>			
1200mm (47 1/4") long	Bichromated	10	9-U1010-00-0-3
* = Color		PU = Packaging Unit	

### Additional information

- Made of steel
- 10mm diameter rods
- May be cut to size
- Use with astragal mortise lock (6-C7250-19-0-0)

# Guides & Strike Cups

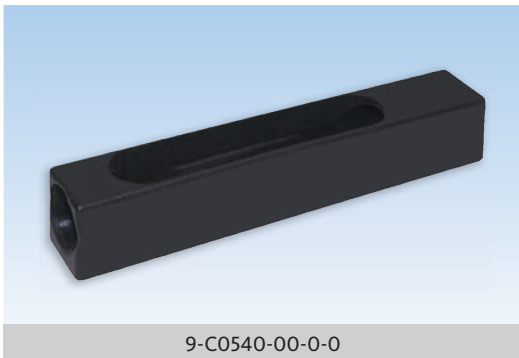
for Driving Rods



9-C4310-00-0-8B

### Guide for Top and Bottom Rods

Description	Color	PU	Part Number
Guide	SS	1	9-C4310-00-0-8B
* = Color		PU = Packaging Unit	



9-C0540-00-0-0

### Guide for Top and Bottom Rods

Description	Color	PU	Part Number
Guide	Black	1	9-C0540-00-0-0
* = Color		PU = Packaging Unit	



9-29525-00-0-0

### Strike Cup – Ø10 x 22mm

Description	Color	PU	Part Number
Solid brass 22mm sleeve for shoot bolts	Brass	10	9-29525-00-0-0
* = Color		PU = Packaging Unit	



9-C4306-22-0-0



9-C4306-27-0-0

### Adjustable Strike Cups 22 and 27mm

Description	Color	PU	Part Number
22mm sleeve for shoot bolts	Black	100	9-C4306-22-0-0
27mm sleeve for shoot bolts	Black	100	9-C4306-27-0-0
* = Color		PU = Packaging Unit	

### Additional information

- Made of reinforced nylon
- In and out adjustment of 1mm
- Allow a lateral movement of  $\pm 2.8$ mm
- Possible reach of 5mm